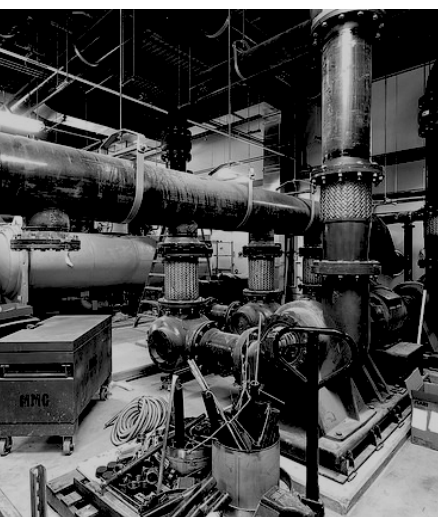




WHAT'S INSIDE?

- Project Spotlight • 1
- Mark's Message • 2
- Power of Prefab • 2
- 6th Annual Oktoberfest • 3
- Employee Spotlight • 4
- JW Marriott Awards • 4



SANFORD MEDICAL CENTER FARGO

MMC is on the verge of completing its largest project to date, the Sanford Medical Center Fargo (SMCF). The new, nearly one million square foot, 11 story project includes a new children's/pediatric intensive care unit, trauma and operating rooms, neurosurgery, heart surgery, interventional cardiology, emergency service facilities, NICU, family birthing center, ICU, Angio suites, and a new central utility plant.

SMCF was a design-assist project that started over three years ago with General Contractors Mortenson Construction and Nor-Son Construction. MMC began construction with underground piping in April of 2014. MMC was responsible for the installation of all mechanical and plumbing systems. Between all of our subcontractors, our combined crews maxed out at 186 craft workers. Of that number, 53 of them worked directly for MMC as pipefitters. Over the course of the project, those workers put in over 450,000 hours of labor in producing and installing the mechanical systems and equipment.

FUN FACTS

- 1.5 million pounds of ductwork.
- 449,000 feet of plumbing, heating and air conditioning piping. That's 85 miles—enough to stretch from the job-site to Grand Forks.
- 4,000 plumbing fixtures.
- 4,500 tons of cooling (that's equal to 3,000 residential air conditioners).
- 1 million cubic feet per minute of air movement (that's enough to blow up one million balloons every minute)
- Crew makeup (sitewide, across all trades):
 - 50% of workers were from Fargo, Moorhead and West Fargo.
 - 93% of workers were from North Dakota, South Dakota and Minnesota.

Another unique aspect of this project is the Central Energy Plant (CEP). The CEP feeds the medical center underground through a tunnel supplying steam and chilled water. As for energy efficiency, the project utilizes two 150 ton chillers that reject their heat into the building's heating loop, re-using that energy. The steam header in the CEP is the single longest piece of fab that MMC ever installed at just over 70 feet. We had to add an extension to the bed of the truck!

SMCF utilized Modulus racks with a total of 580 2D racks and 250 3D racks on-site. The project also utilized modularization on bath pods. Approximately 266 bath pods were installed in patient rooms on 5th to 10th floors. The pods are located on the exterior of the building so they were installed using a crane and dropped into place. We also prefabricated showers, toilets, sinks and floor tiling so all that needed to be done was to hook up the plumbing.

The SMCF project will be complete in the end of January, with Sanford Health serving their first patients in the summer of 2017. Shelled space remains throughout the building for future buildouts and expansion. The 7th floor is completely core and shell with a buildout expected to begin in spring of 2017.

The project was a full team effort from beginning to end. Thanks to Chad Nelson, Keith Leier, Derek Fong, Al Oakes, Randy Strain, Damian Laudenbach, Don Ahlschlager, Tea Manthey, Larry Moore, Todd Deming, Scott Johnson, Alex Olson, Gene Summerville, Steve Randt, Kerri Schoenbauer, Emily Smith, Kyle Gow and Doug Kesler.

MARK'S MESSAGE

I am often asked to describe MMC's culture and each time I am asked, the same handful of words always comes to mind. At the core, MMC's culture is dedicated, flexible, fun, knowledgeable, genuine and supportive. Some of these qualities are a result of our business approach and management style but most of MMC's culture is a result of our people.

When we ask our employees what their favorite thing about working for MMC is, we always get the same answer—"the people." We have a family-style culture that is collaborative, caring and genuine. Employees at MMC get to know one another and support each other in a way that isn't often seen in the corporate world. We have a lot of fun at MMC. We have the "work hard, play hard" mentality with employees who are extremely dedicated and passionate but who also simply enjoy the work they do. MMC employees demand excellence and quality in the work they do and they take a lot of pride in what they do.

One unique component of our culture is the "open-door" communication style we have. We have a relatively flat organizational structure so there are very few levels separating our staff from our senior executives. This dynamic allows for open communication between our managers and the employees they lead. To maintain our culture, we aim to hire talented people with the right personality to fit the dedicated and family-style culture we've established. This approach to hiring has helped us build a team of employees who embody our values and business style.



A handwritten signature in black ink, appearing to read 'Mark Anderson'.

Mark Anderson
President

POWER OF PREFAB

The MMC team recently installed a new domestic booster pump skid for the 30th floor of the 50 South 6th building in Minneapolis. The new station is all stainless steel and has less openings because all of the joints were able to be welded. In order to complete the project within the customer's time frame, our team had to lay out everything and have as much prefabricated as possible. Our team drained the main risers in order to complete the install. We were able to shut down at 11:30 PM and have the system back on line by 5:00 AM the following morning. Without

prefabrication capabilities, this project would not have been possible. A huge thank you to our plumbing team! Tasha Lawrence drew the layout and Steve Walters helped with the layout and ensuring materials and plans were in order. Rich Svidron did the majority of the welding for the booster pump skid.

"The project could not have gone better. The new station looks awesome."

- Gary Trudeau
General Engineering Manager at Hines





MMC'S 6TH ANNUAL OKTOBERFEST

On October 6th we held our 6th Annual Oktoberfest. Our fabrication shop was completely transformed with lights, food, beer, scotch tasting and cigars. We want to thank everyone for coming out to celebrate with us!

"I should and will danke/thank all of MMC for the best Oktoberfest (and any other event) every year."

"Thank you all. I enjoyed it immensely."

"Thanks to everyone at MMC. It was a great time. Food, drinks and great conversation. Greatly appreciated!"

Danke!
**OKTO
BER
FEST** 2016
MMC



When did you start working for MMC? July of 2010

Where did you grow up?
Chisholm, MN

What is the one, single food that you would never give up? Pasta

What is your favorite TV show?
Criminal Minds

What is your favorite dessert?
Toast Almond Fudge Ice Cream

What is your favorite place to eat lunch? Biaggi's

What is something that most people do not know about you?
My first job was helping out at my family's Hardware Hank store.

What do you like to do when you're not working? I love heading up north to my cabin on Side Lake, spending time with my family and friends, watching my three kids play sports, and seeing them experience new things.

What is your favorite quote?
"Enjoy the little things in life. For one day you will look back and realize they were the big things."

What is your favorite day out of the year? Thanksgiving

What is one thing you would never leave the house without? Just one?!
My phone.

SARA VUKICH
Accounting Manager



JW MARRIOTT EXCELLENCE AWARD AND LEED CERTIFICATION

Best Hospitality Project

In late September, NAIOP (Commercial Real Estate Development Association) awarded 10 twin cities projects the NAIOP Minnesota Awards of Excellence.

The MMC team is proud to have been a part of the JW Marriott Minneapolis Mall of America project which received an award of excellence in the hospitality category. The 14-story, 342-room JW Marriott Minneapolis Mall of America was completed with M.A. Mortenson Company as the general contractor.

LEED Certified

The JW Marriott Minneapolis Mall of America received a triple LEED certification. The complex's three buildings (hotel, retail and office) each received their own LEED certification despite their interconnectedness. This is because each building has a different function and use.

"The project may be without precedent in Minnesota. I think it's pretty unique for Minnesota. There are a few organizations that have done two [at the same time], but doing three is unique," said Sheri Brezinka, executive director of the state chapter of the Green Building Council.

- Excerpt from Finance and Commerce

Finance and Commerce Awards

On October 18th, Finance and Commerce recognized Minnesota's top construction projects with awards in its ninth annual top projects series. MMC is honored to have been a part of four of these top projects:

Mayo Clinic Square
Fairview Southdale Carl N. Platou Emergency Center
4Marq Apartments
St. Paul Academy & Summit School Huss Center for Performing Arts

Projects are judged for their degree of difficulty, creativity in design, innovative construction techniques, cooperation among contractors and management, and sustainability efforts.



METROPOLITAN MECHANICAL CONTRACTORS, INC.

7450 Flying Cloud Drive, Eden Prairie, MN 55344 | 952.941.7010 | metromech.com